

Schuylkill River Valley National Heritage Area Management Plan and Environmental Impact Statement

Figure 3-1 Heritage Resources

Heritage Resources

★ Heritage Resource Community

▲ Heritage Resource Site

▨ Heritage Resource Area

Recreational Resources

⦿ Water Trail Landing

Schuylkill River Trail:

— Completed

— Funded- In Design

— Under Study

Perkiomen Trail and

Union Canal Towpath Trail (Tulpehocken Creek)

— Completed

— Open in 2003

— Appalachian Trail

— Horse-Shoe Trail

■ National Landmark

■ National Park

■ State Park

■ State Forest

■ State Gameland

— Major Streams

— Major Roads

— Roads

▭ County Boundaries

▭ Municipal Boundaries

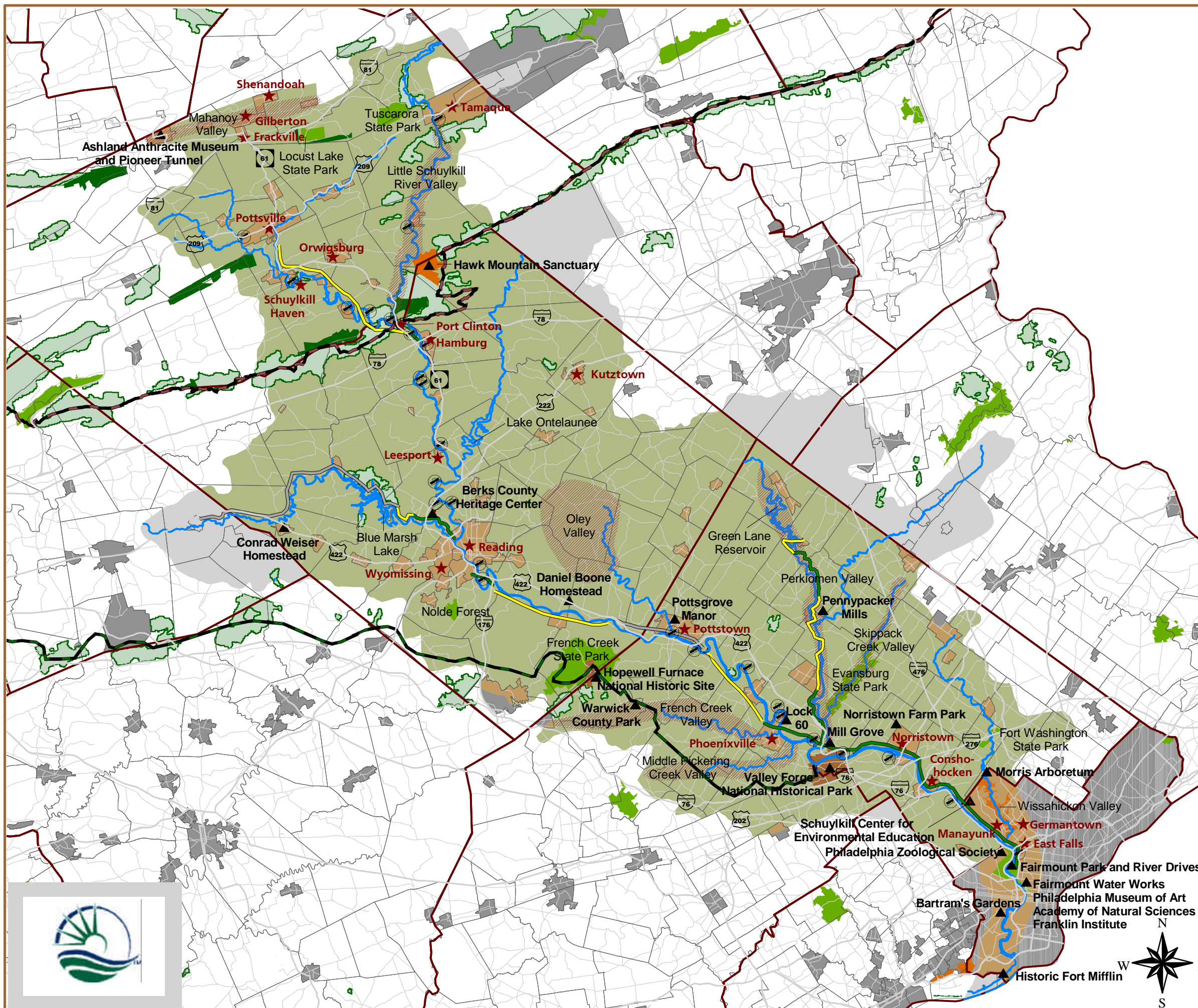
Cities and Boroughs

■ Inside Heritage Area

■ Outside Heritage Area

■ National Heritage Area

■ Schuylkill Watershed



7 0 7 14
Miles

Map Compiled By:
Wallace Roberts & Todd, LLC