

Schuylkill River Water Trail – Section 4(f) Writeup for PFBC Website

The Pennsylvania Department of Transportation (PennDOT) is in the design phase for the SR 0422, Section 29M Reconstruction Project in the City of Reading, West Reading Borough, Wyomissing Borough, Cumru Township, and Exeter Township, Berks County. Project activities include the widening of SR 0422 within the corridor to facilitate additional travel lanes, wider shoulders, and a wider median. In addition, interchange and structure improvements will be made within the project limits. Reconfiguration of the Penn Street/Penn Avenue and Lancaster Avenue interchanges and reconstruction of the N Wyomissing Boulevard and I-176 interchanges will be undertaken. All bridges on SR 0422 within the corridor will be replaced, as well as the N Wyomissing Boulevard and I-176 bridges over SR 0422. In addition, the Bingaman Street bridge over the Schuylkill River will be replaced, and the Buttonwood Street bridge spans over SR 0422 will be replaced. The existing SR 0422 corridor consists primarily of a 2-lane roadway in both eastbound and westbound directions with four interchanges along the system. The proposed project includes widening the corridor from two to three lanes in both directions.

The proposed project includes four bridge replacements over the Schuylkill River Water Trail. The proposed bridge replacements and temporary access required for construction will result in temporary and permanent impacts to the Schuylkill River Water Trail. Bridge replacements include the Bingaman Street bridge and three bridges over the Schuylkill River (BRKEY 4852, 4854, and 4857). The bridge replacements are required to accommodate the proposed additional lanes on SR 0422 and alleviate existing safety issues. Temporary construction easements totaling 7.29-acres will be required for construction. Additionally, the bridge replacements will result in 0.24-acres of permanent impacts within the Schuylkill River Water Trail due to the slightly larger bridge footprints. The proposed construction will not adversely impact the hydrology and hydraulics, or the “modified recreational” status of the Schuylkill River.

Prior to the start of construction, proper erosion and sediment controls will be installed (e.g., silt fence, turbidity barriers, compost filter socks) to protect wetlands and waterways from sedimentation and further disturbance. Temporary dewatering and stream diversions will be in place to complete work in dry conditions. Upon completion of construction, temporary measures will be removed, and the site will be restored to pre-construction conditions. An Erosion and Sediment Control Plan will be prepared and approved by the Berks County Soil Conservation District prior to construction, which is set to begin in 2027.

The Schuylkill River Water Trail is heavily utilized by non-powered boaters (canoes, kayaks) and river users and associated community river events will not be hindered by the proposed project. An Aids to Navigation (ATON) Plan will be prepared and approved prior to construction to safely direct boaters through the project area.

If you have any further questions or comments about the permanent or temporary impacts to the Schuylkill River Water Trail, please contact Timothy Benner at (610)-841-2700 or tbenner@mctish.com.

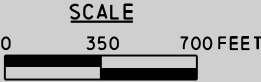
IMPACT PLAN
PFBC WATER TRAIL
SHEET 1 OF 2



SCHUYLKILL RIVER

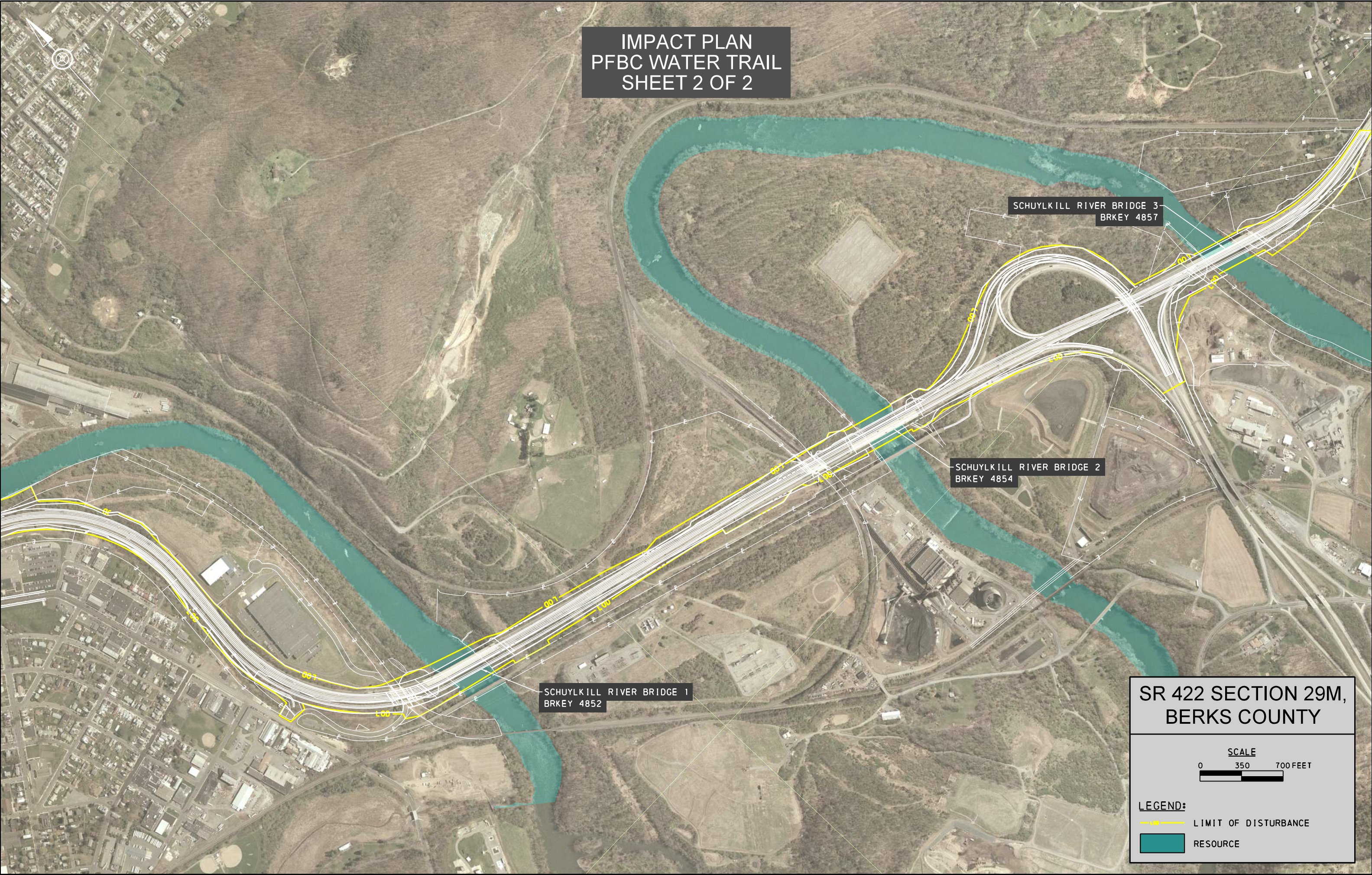
BINGAMAN ST BRIDGE

SR 422 SECTION 29M,
BERKS COUNTY



- LEGEND:
- LIMIT OF DISTURBANCE
 - RESOURCE

IMPACT PLAN
PFBC WATER TRAIL
SHEET 2 OF 2

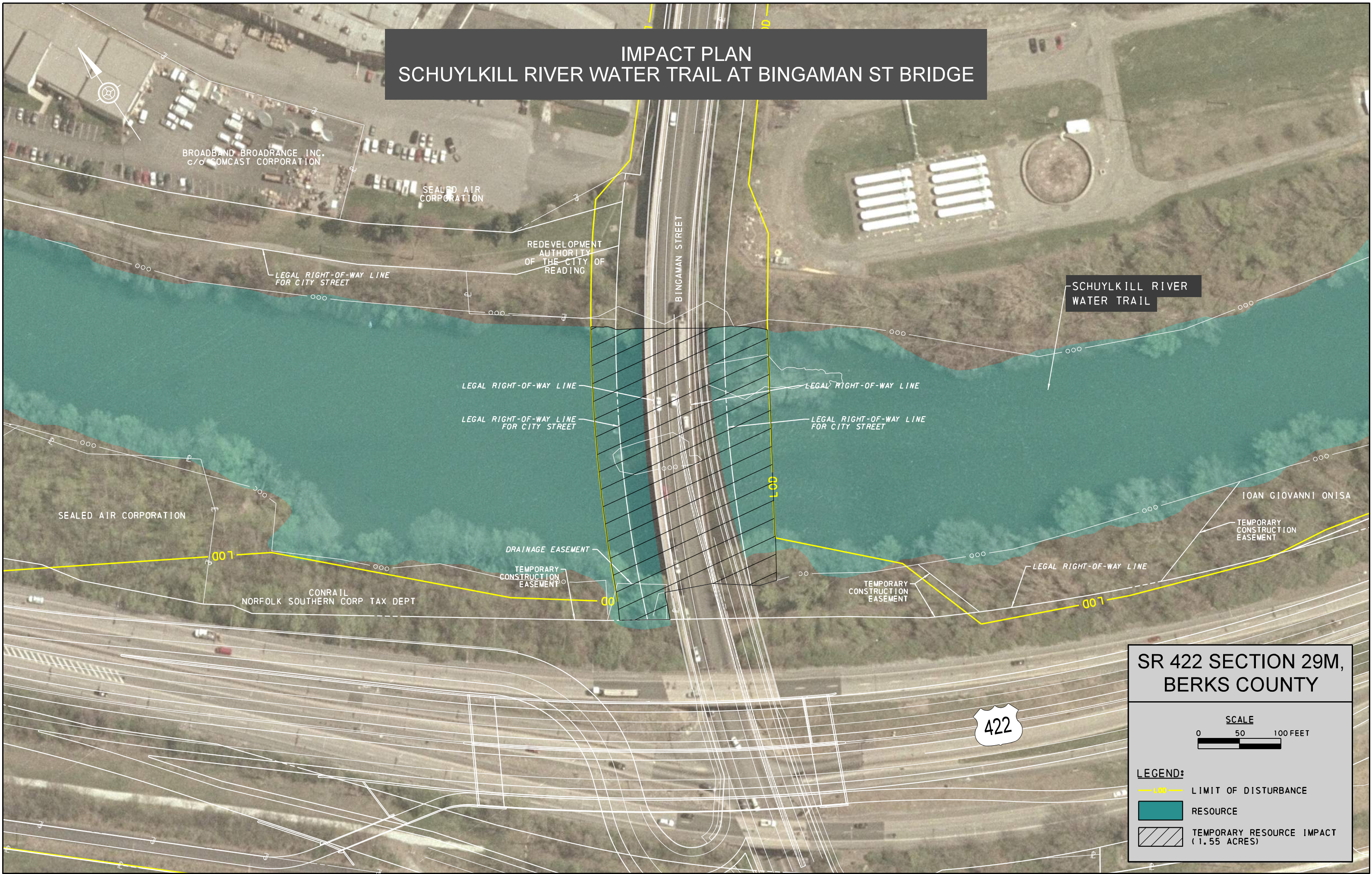


**SR 422 SECTION 29M,
BERKS COUNTY**

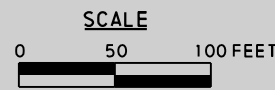
SCALE
0 350 700 FEET

LEGEND:
—(—)— LIMIT OF DISTURBANCE
RESOURCE

IMPACT PLAN SCHUYLKILL RIVER WATER TRAIL AT BINGAMAN ST BRIDGE



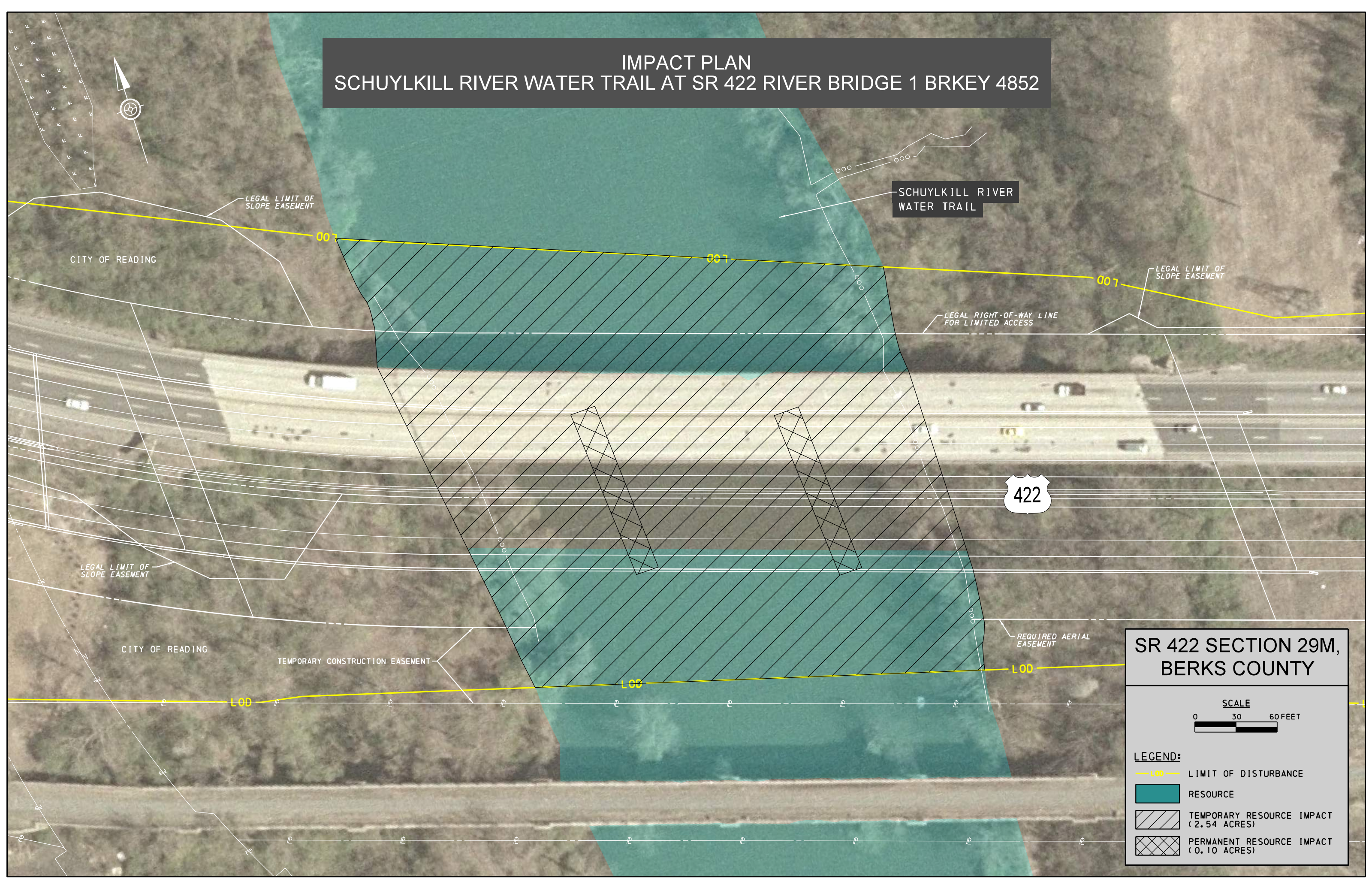
SR 422 SECTION 29M,
BERKS COUNTY



- LEGEND:**
- LIMIT OF DISTURBANCE
 - RESOURCE
 - TEMPORARY RESOURCE IMPACT (1.55 ACRES)

IMPACT PLAN

SCHUYLKILL RIVER WATER TRAIL AT SR 422 RIVER BRIDGE 1 BRKEY 4852



**SR 422 SECTION 29M,
BERKS COUNTY**

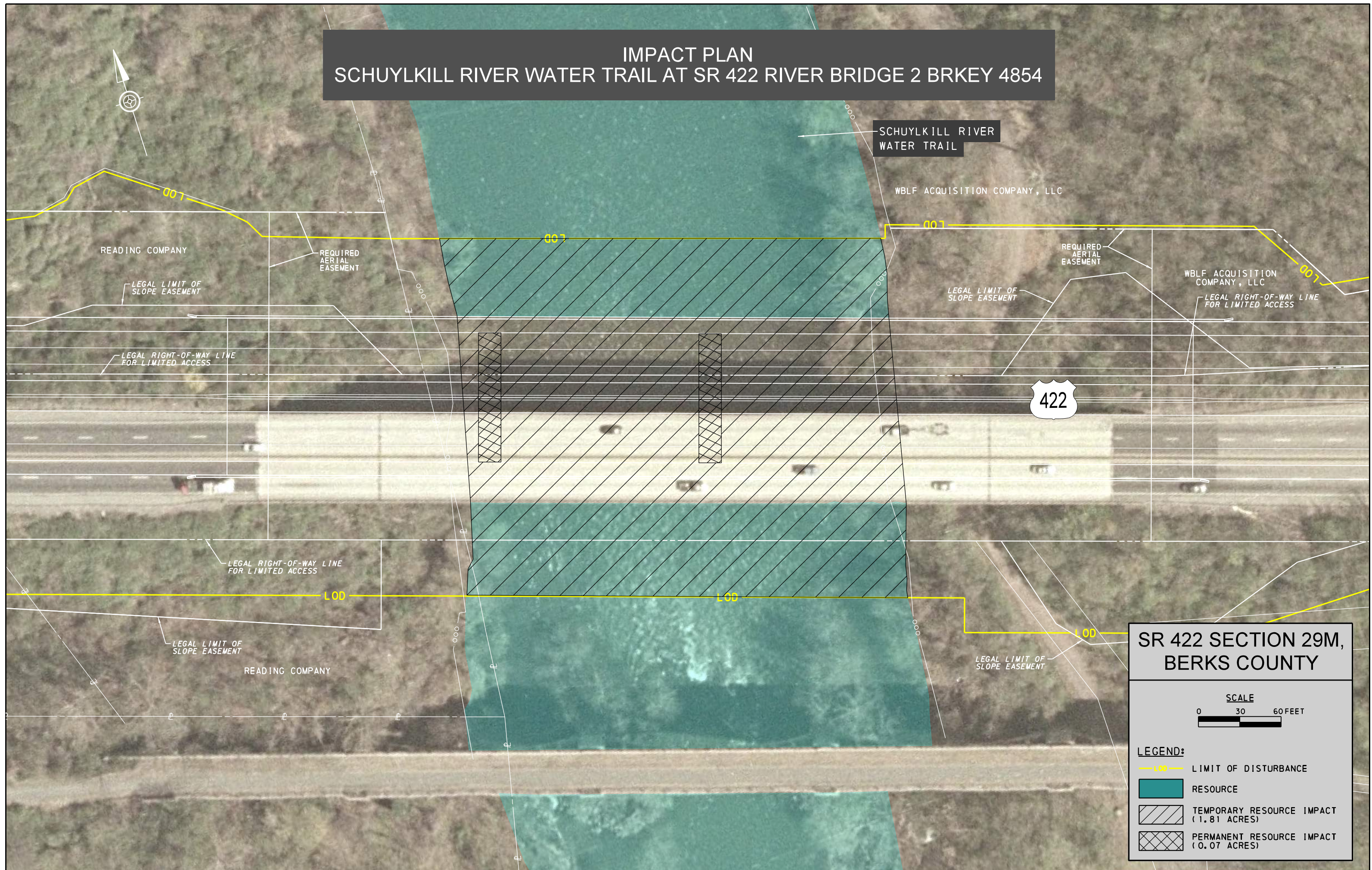
SCALE
0 30 60 FEET

LEGEND:

- LOD — LIMIT OF DISTURBANCE
- RESOURCE
- TEMPORARY RESOURCE IMPACT (2.54 ACRES)
- PERMANENT RESOURCE IMPACT (0.10 ACRES)

IMPACT PLAN

SCHUYLKILL RIVER WATER TRAIL AT SR 422 RIVER BRIDGE 2 BRKEY 4854



IMPACT PLAN
SCHUYLKILL RIVER WATER TRAIL AT SR 422 RIVER BRIDGE 3 BRKEY 4857

