



SCHUYLKILL RIVER RESTORATION FUND

2023 Land Transaction Guidelines

Overview

The Schuylkill River Restoration Fund is offering matching grants of up to \$4,000 per project to assist with transaction costs for permanent land protection projects (conservation easements, full fee acquisitions, donations) within the Schuylkill River watershed - the largest tributary to the tidal Delaware River and Bay. Grants can be awarded to qualified non-profit tax-exempt 501(c)(3) conservation organizations or units of government. The purpose of these grants is to incentivize and facilitate the protection of high priority lands for water quality and habitat protection in the Schuylkill River watershed.

Eligible Projects

1. Projects must be within and/or including areas identified as high priority lands by the Schuylkill Action Network Watershed Land Protection Collaborative. High priority lands are those with scores of 8-10 on the priority lands composite map, which can be accessed in map and/or data format below and on the Schuylkill Waters website: www.schuylkillwaters.org
2. Projects protecting "friction areas" and/or larger areas of priority lands will be given priority over others. See priority lands website for information on "friction areas" and refer to the map below.
3. Reimbursable transaction expenses must be incurred between 1/1/23 and one year from the date of the signed grant agreement. Project expenses claimed as match must be incurred and paid for by December 31, 2023. Real estate transaction projects completed prior to 1/1/23 are not eligible for this funding round. "Completed" refers to the closing date of the land transaction. Projects settlements must occur within one year of the signed agreement to be eligible for funding. All grantees must provide a copy of a fully signed Purchase and Sale Agreement with the landowner with only due diligence contingencies remaining prior to the release of grant funds.

Eligible Expenses

Transaction costs eligible for reimbursement include (but may not be limited to): land surveys, attorney fees, land protection staff time, consultant fees, the conservation group's appraisal costs, recording fees, title expenses, and stewardship costs.

Grant Award Process

Only one application may be submitted per project. Applications are due to SRG by **April 13, 2023** which may be before or after transaction costs are incurred. Applications will be prioritized based primarily on the amount of friction and/or priority lands protected. However, other factors, including the date (or estimated date) of the transaction, the applicant's history, the level of protection provided/proposed, the amount/type of match, and date, quality, and completeness of the application may also be used to prioritize if applications exceed available funds, with the goal of fulfilling the purpose of the program to the greatest degree possible with successful projects.

Reimbursement Process

Grant funds will be disbursed on a reimbursement basis by the Schuylkill River Greenways. All expenditures to be reimbursed must be documented before funds are released, in accordance with Schuylkill River Restoration Fund Grant program guidelines. Eligible transaction costs must be completed and all required invoice documentation – including the recorded easement, sale agreement, or deed – within one year of signed grant agreement. Completion of grant reporting and required paperwork can be completed beyond this date.

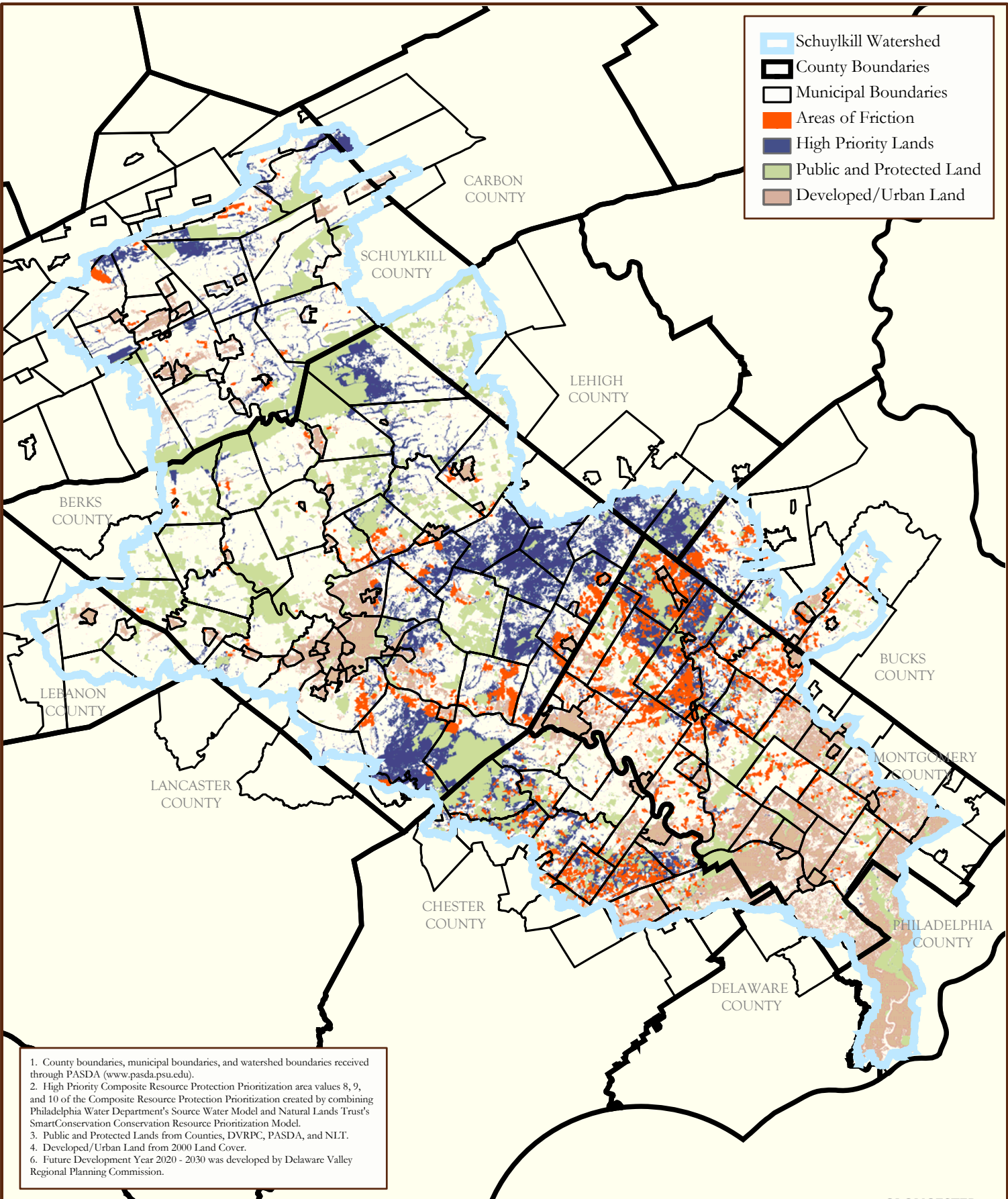
Match Guidance

Match requirements are the same as listed for Schuylkill River Restoration Fund implementation grants.

Application

Applicants to this program must use the standard Schuylkill River Restoration Fund Grant Program application through the online portal. The grant portal can be accessed at www.schuylkillriver.org. You can get this application form by contacting the Schuylkill River Greenways at 484-945-0200 or tfenchel@schuylkillriver.org

Under "Project Description" include the name of the entity to hold the land or easement and, for conservation easements, confirm that water resource values will be protected and indicate what (if any) model language will be used to do so. Under "Project Scope" include the latitude, longitude, and number of acres protected, and include an aerial or map showing the area to be protected (ideally, overlaid with SAN prioritization results.) In the budget, under "Grant Request" indicate whether grant funds will be used for land survey, appraisal, legal fees, staff time, consultant fees, title expenses, recording fees, stewardship, or other costs (describe).



Schuylkill Watershed

County Boundaries

Municipal Boundaries

Areas of Friction

High Priority Lands

Public and Protected Land

Developed/Urban Land

1. County boundaries, municipal boundaries, and watershed boundaries received through PASDA (www.pasda.psu.edu).
2. High Priority Composite Resource Protection Prioritization area values 8, 9, and 10 of the Composite Resource Protection Prioritization created by combining Philadelphia Water Department's Source Water Model and Natural Lands Trust's SmartConservation Conservation Resource Prioritization Model.
3. Public and Protected Lands from Counties, DVRPC, PASDA, and NLT.
4. Developed/Urban Land from 2000 Land Cover.
6. Future Development Year 2020 - 2030 was developed by Delaware Valley Regional Planning Commission.

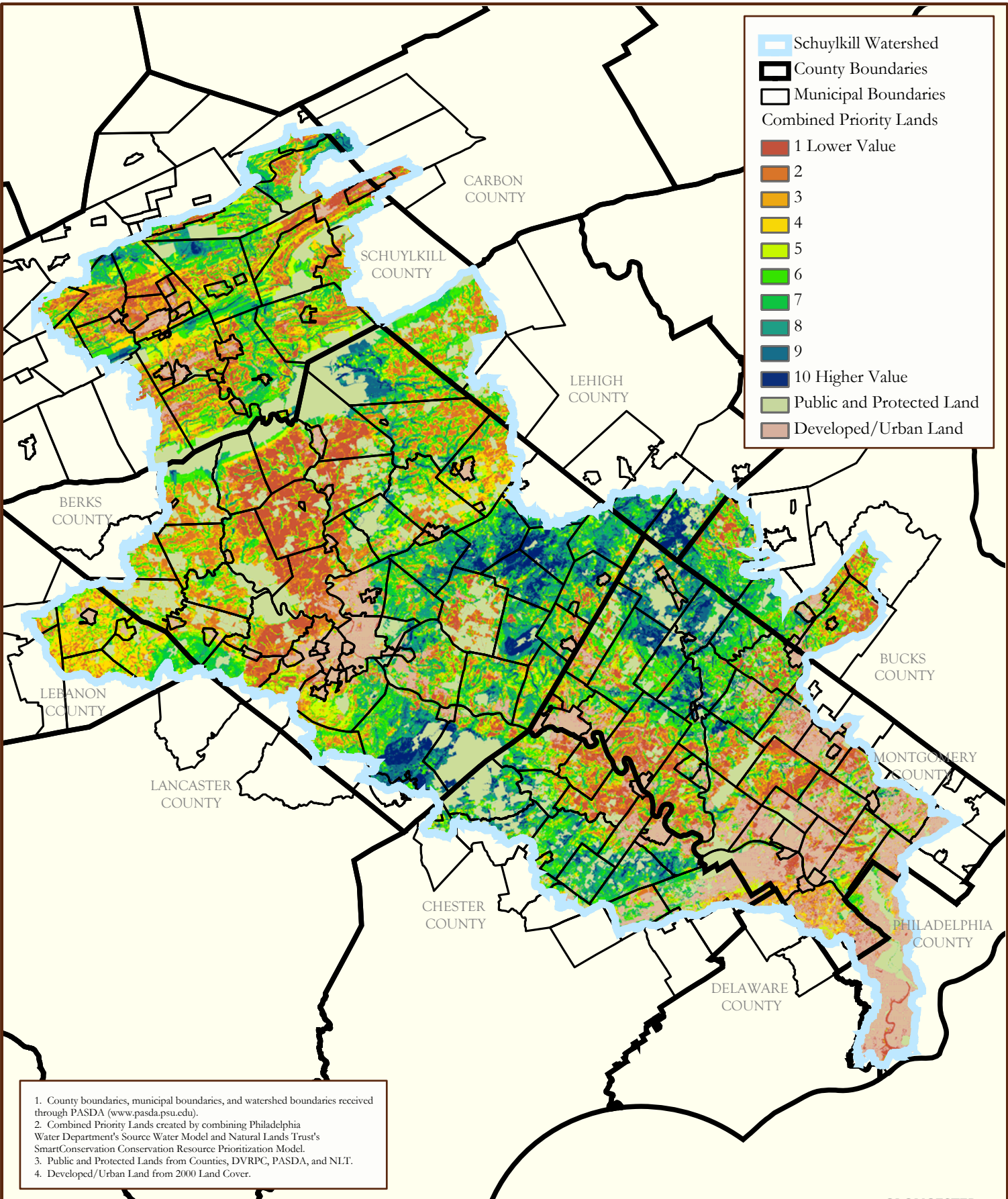
Land Prioritization Strategy Partners:



Areas of Friction

SCHUYLKILL WATERSHED
LAND PRIORITIZATION STRATEGY

0 25,000 50,000 Feet
 Compiled By: DCR 02/04/08



Schuylkill Watershed

County Boundaries

Municipal Boundaries

Combined Priority Lands

1 Lower Value

2

3

4

5

6

7

8

9

10 Higher Value

Public and Protected Land

Developed/Urban Land

1. County boundaries, municipal boundaries, and watershed boundaries received through PASDA (www.pasda.psu.edu).
2. Combined Priority Lands created by combining Philadelphia Water Department's Source Water Model and Natural Lands Trust's SmartConservation Conservation Resource Prioritization Model.
3. Public and Protected Lands from Counties, DVRPC, PASDA, and NLT.
4. Developed/Urban Land from 2000 Land Cover.

Land Prioritization Strategy Partners:



Combined Priority Lands

SCHUYLKILL WATERSHED
LAND PRIORITIZATION STRATEGY

N

0 25,000 50,000 Feet

Compiled By: DCR 02/04/08